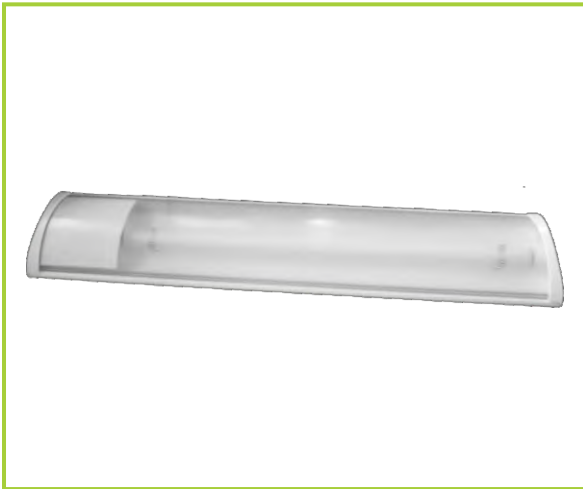




VEHICLE LIGHTING

Standard Light Range and Lighting Electronics 2012



Front side



No diffuser

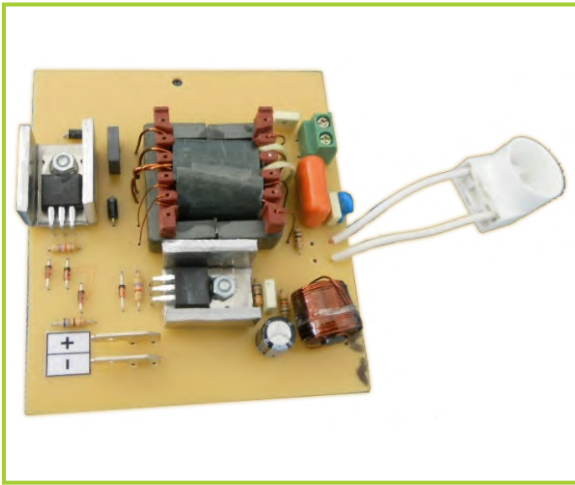


Back side

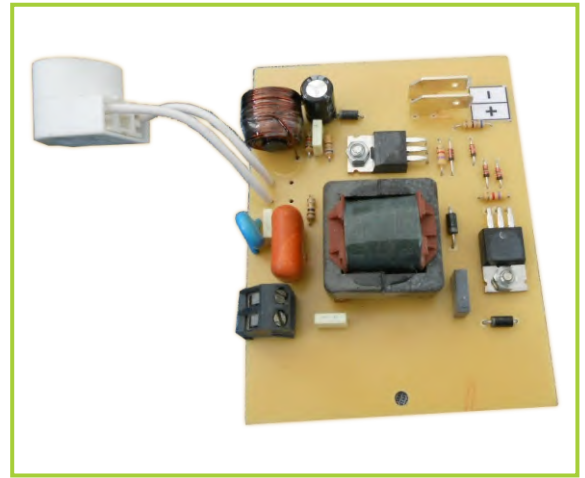


Electronic

Standard Light Range 2012



No case



No case



Aluminium case



Aluminium case

Lighting Electronics 2012

Standard Light Range Specification:

Fluorescent tubes(Wattage): 13, 14, 21, 24, 28, 35

Tybe type: Fluorescent tybe TL5 (diameter 16mm)

Luminaire type: surface mounted

Splash proof: No

Diffuser: Clear

End caps: White

Plastic characterisation: Thermoplastics

Base: extruded aluminium

Voltage: 12 Vdc, 24 Vdc

Standard: IP 62

Option(s): Night light (30% illumination)

2012 Lamps series - the aluminium base and polycarbonate diffuser are extruded on lengths, we are able to manufacture light fittings in any requested length as standard lengths.

TOTAL LENGTH (Standard Light Range 2012):

13W	Tube= 517mm	Total= 620mm
14W	Tube= 549mm	Total= 849mm
21W	Tube= 849mm	Total= 973mm
24W	Tube= 549mm	Total= 673mm
28W	Tube= 1149mm	Total= 1273mm
35W	Tube= 1573mm	Total= 1573mm

***Note: this is standard offer, we also may discuss other lengths.

Lighting Electronics Specification:

Voltage: 12 Vdc, 24Vdc

Wattage: 13 - 35W

Types of fluo lamps: TL5, T8, PLL and LED based units

Optional: dimming

Case: aluminium or none

***Note: if you have special requirements please call us.



DOO ATM

Đorđa Nikšića Johana 11

21000 Novi Sad

Serbia

www.atmlazic.co.rs

office@atmlazic.co.rs

Tel.: +381 21 6213043, 21 2100688, 21 2100689

Fax.: + 381 21 6213043